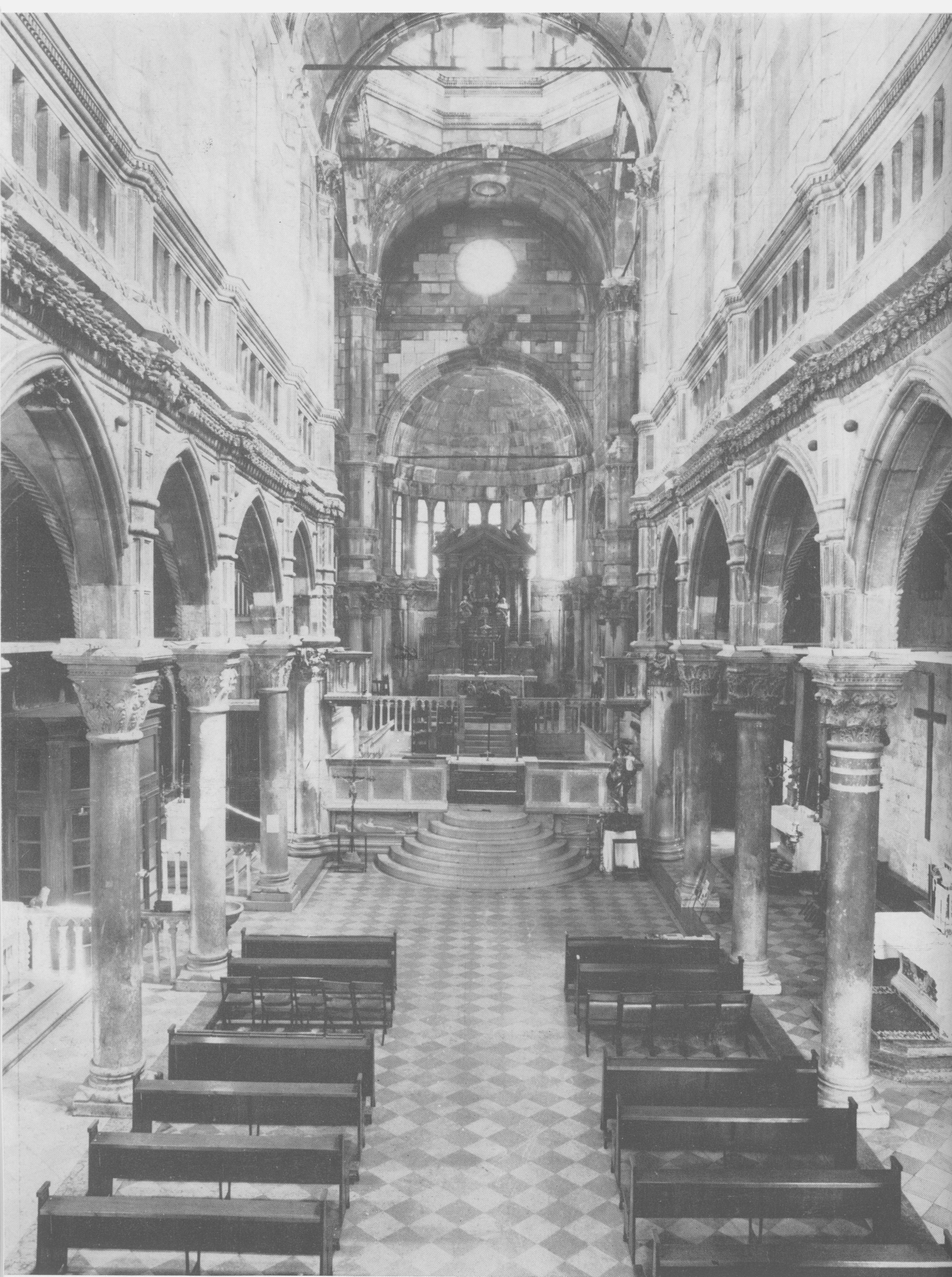
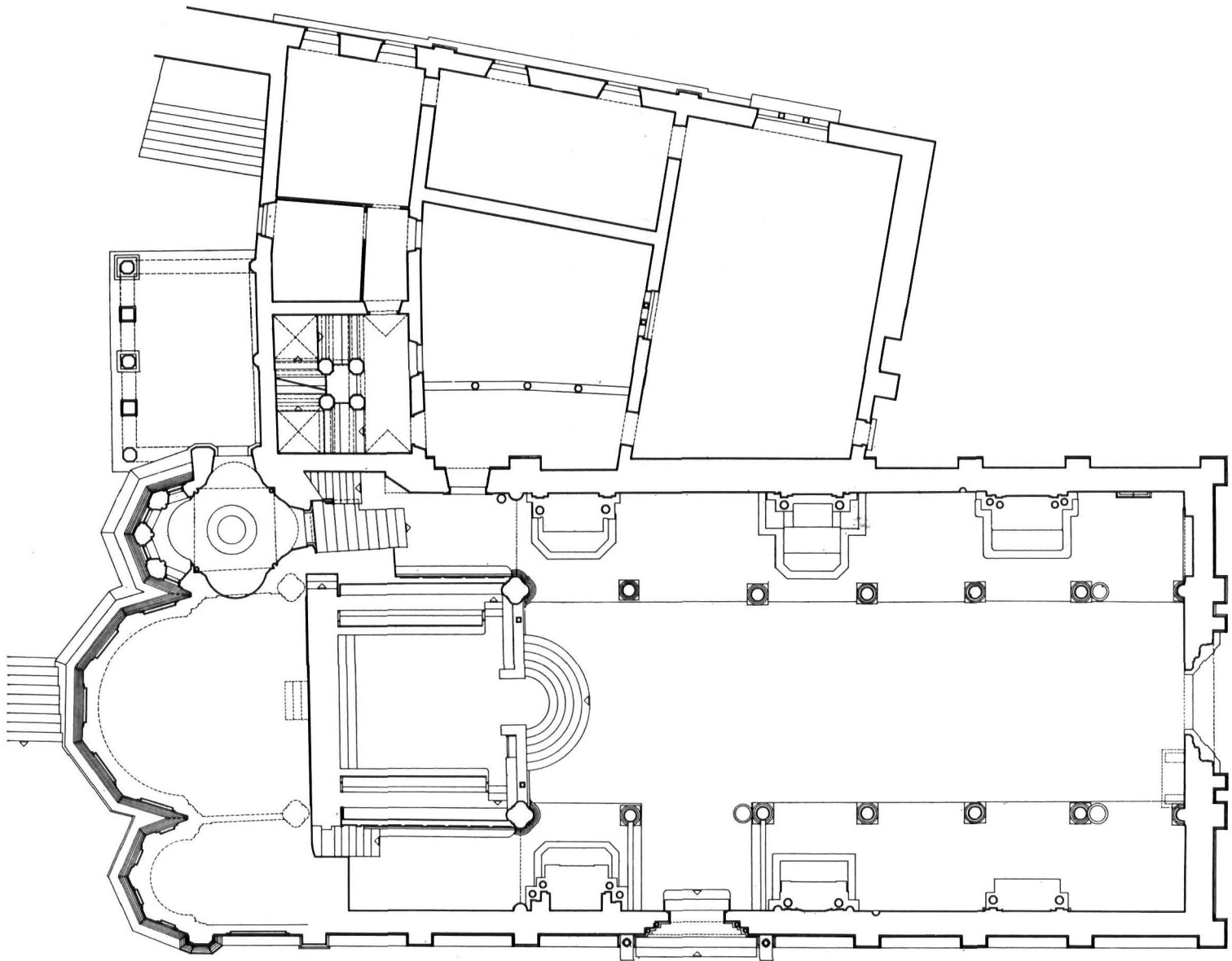


Šibenik, katedrala, pogled sa sjevera i sjeveroistoka (desno), unutrašnjost i svod glavnog broda (slijedeće slike)

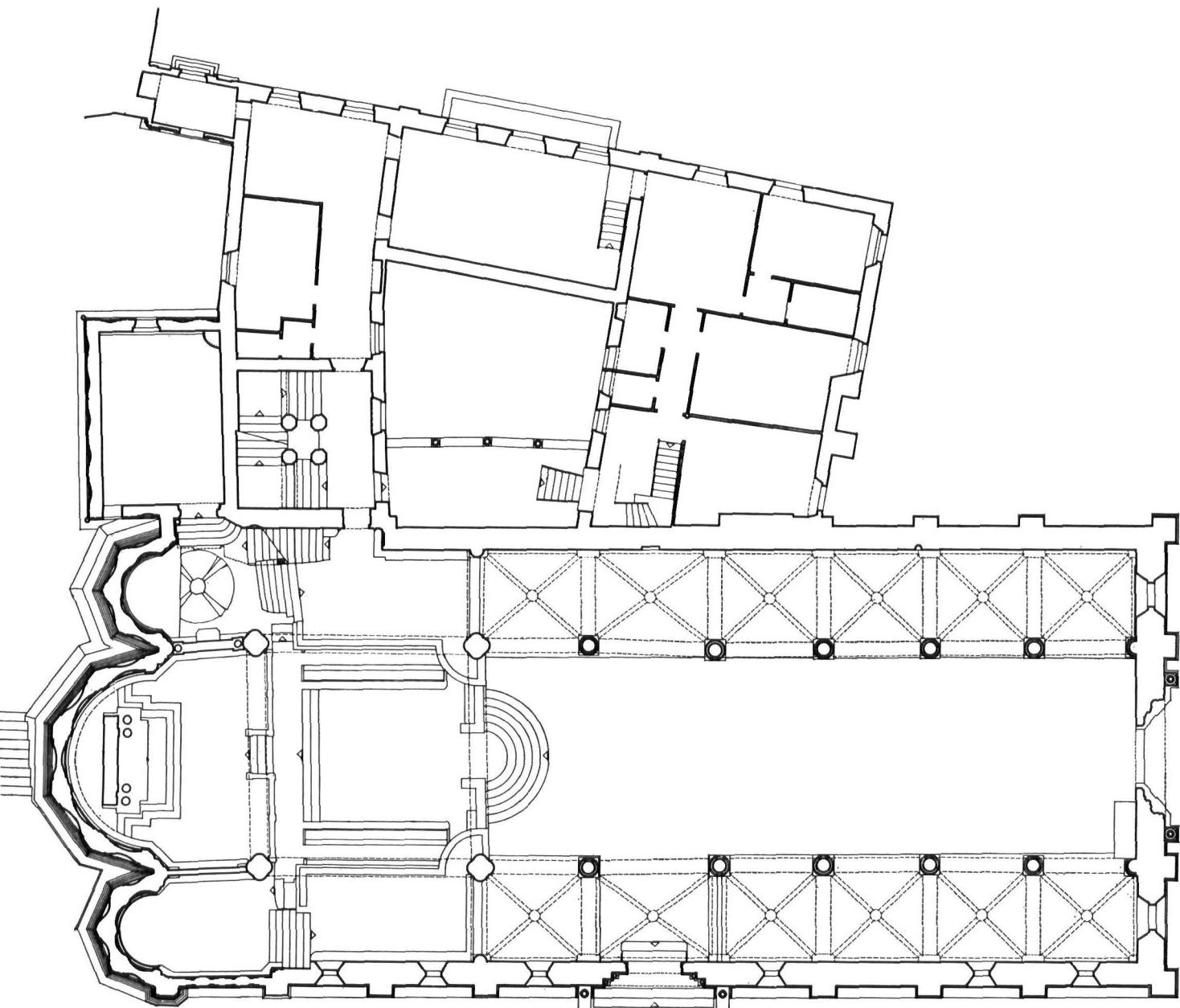




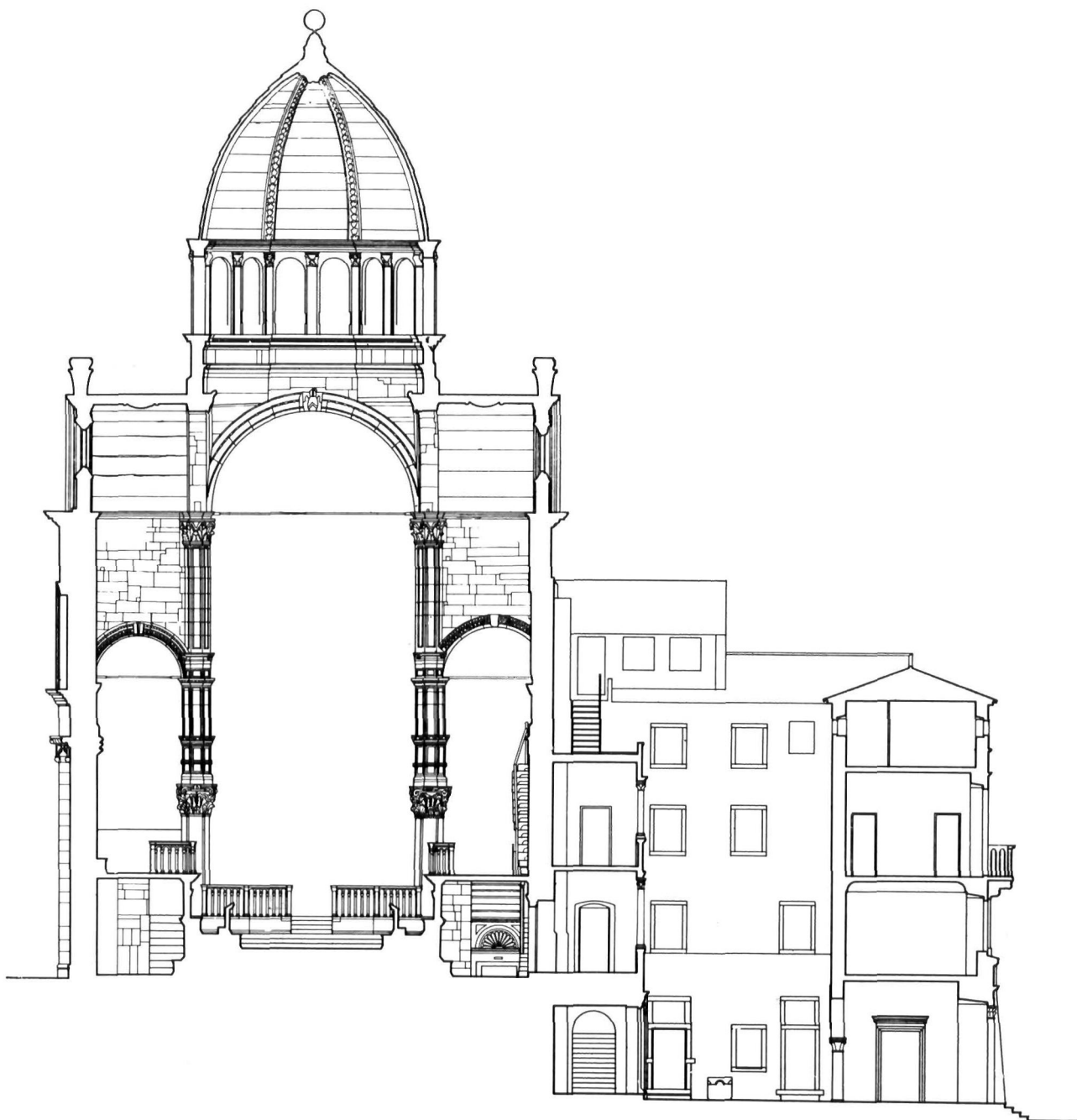




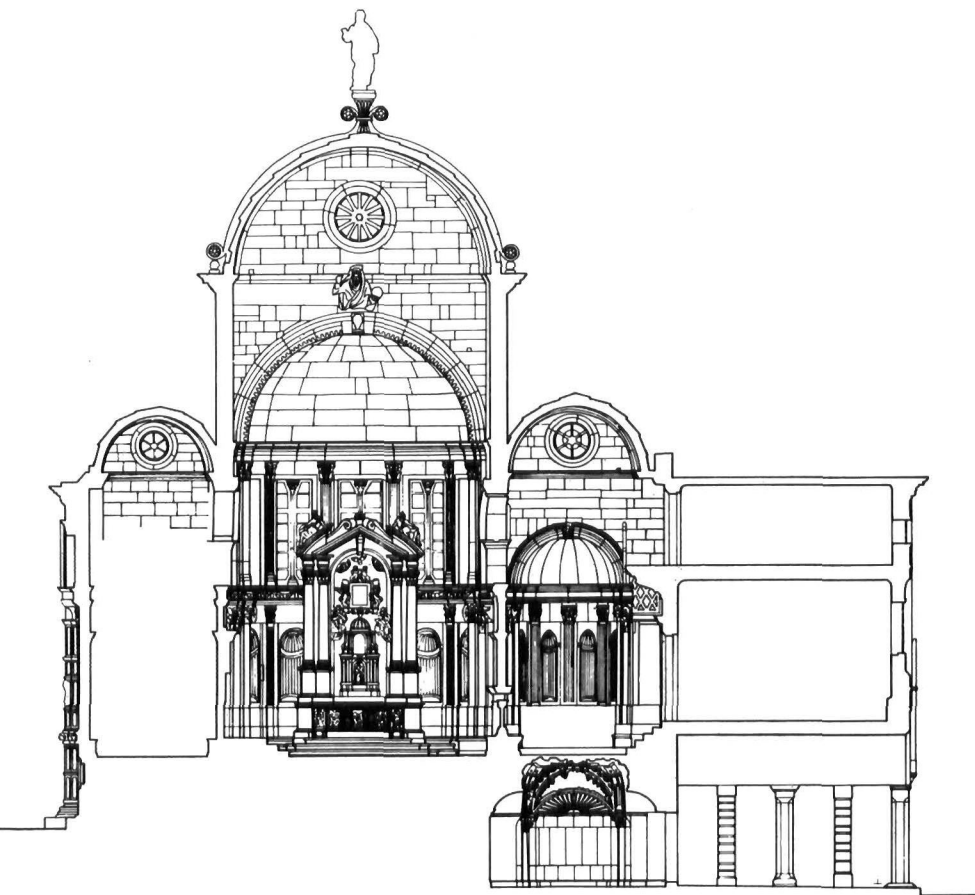
1. ŠIBENIK, tlocrt katedrale, krstionice, prostora pod sakristijom i I. katom biskupske palače, 1:200 (IPU, 1974)



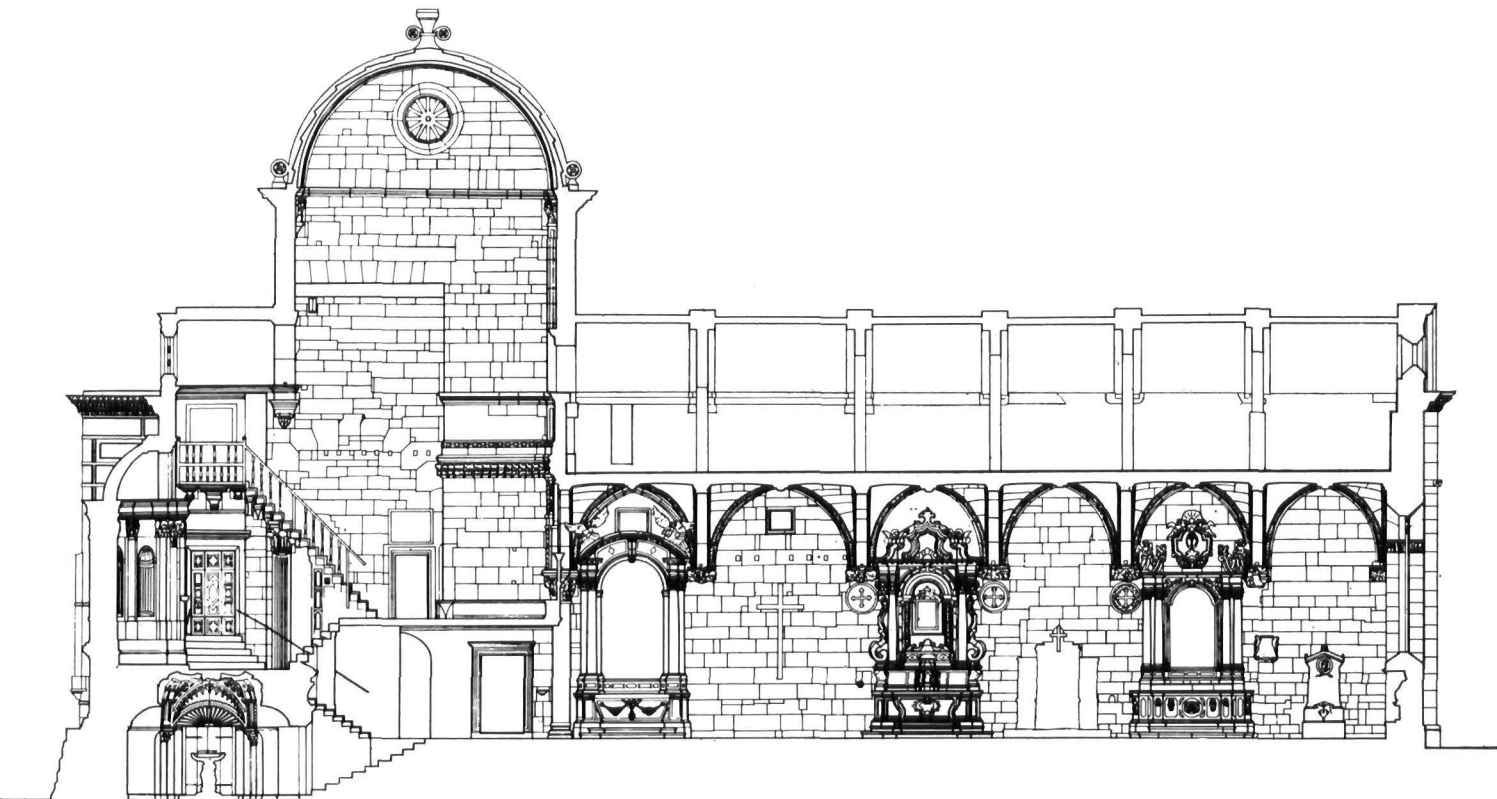
2. Tlocrt katedrale s apsidalnim dijelom, I. etažom sakristije
i II. katom biskupske palače, 1:200
(IPU, 1974)



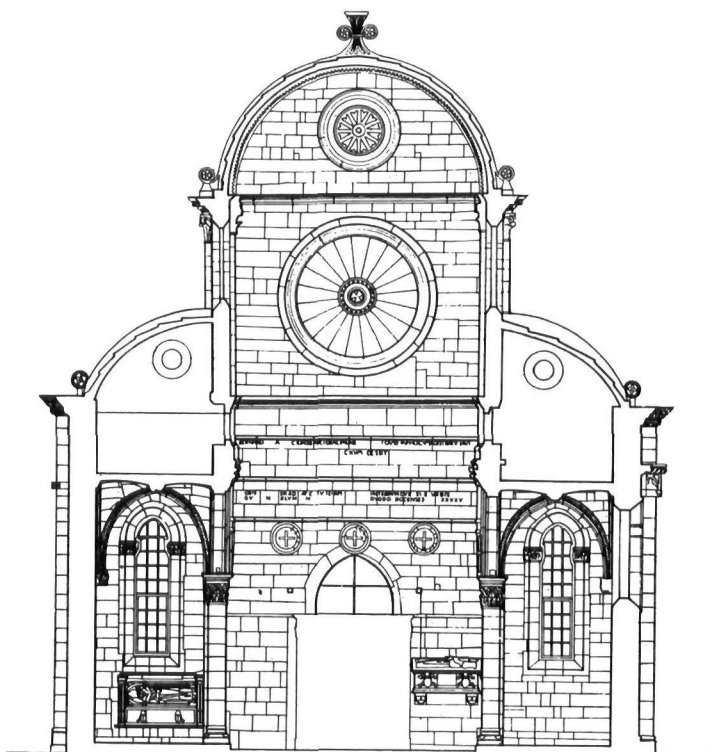
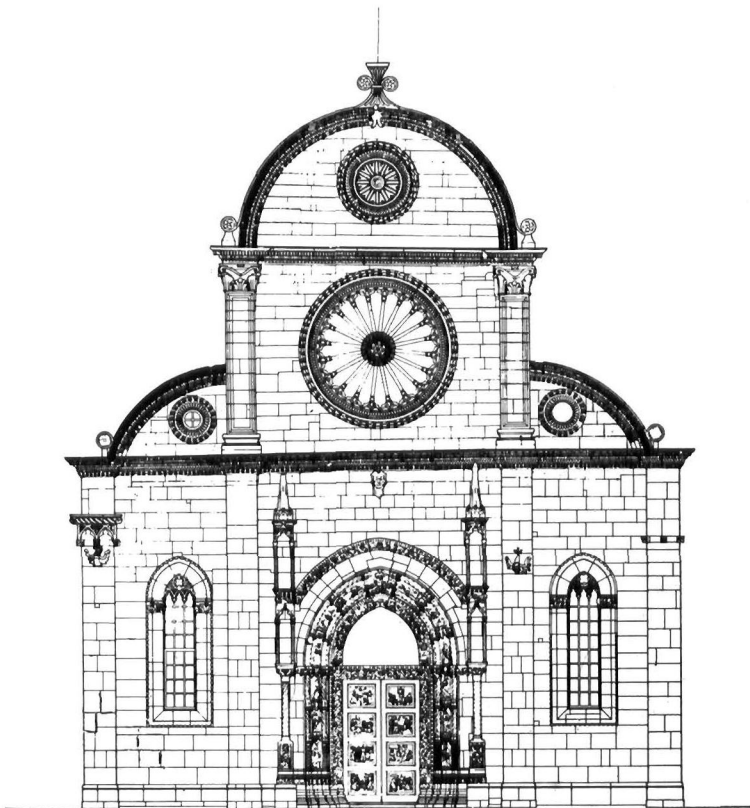
3. Poprečni presjek katedrale kroz transept s pogledom na zapadnu fasadu biskupske palače, 1:200 (IPU, 1974)



4. Poprečni presjek kroz svetište katedrale s presjekom krstionice i sakristije (pogled prema istoku), 1:200 (ZFG, 1974) (gore)

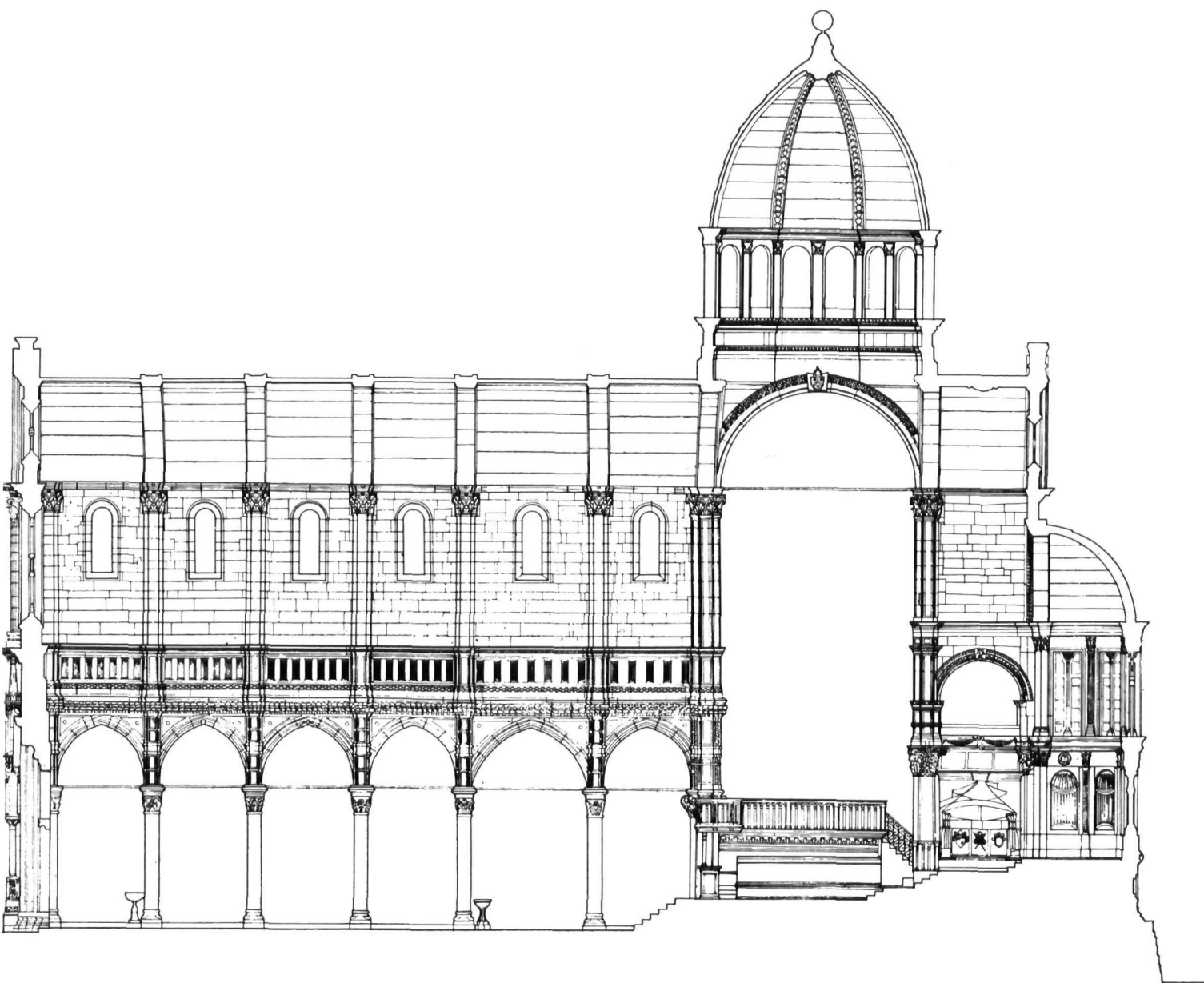


5. Uzdužni presjek katedrale kroz južni brod i krstionicu s pogledom prema jugu, 1:200 (ZFG, 1974)

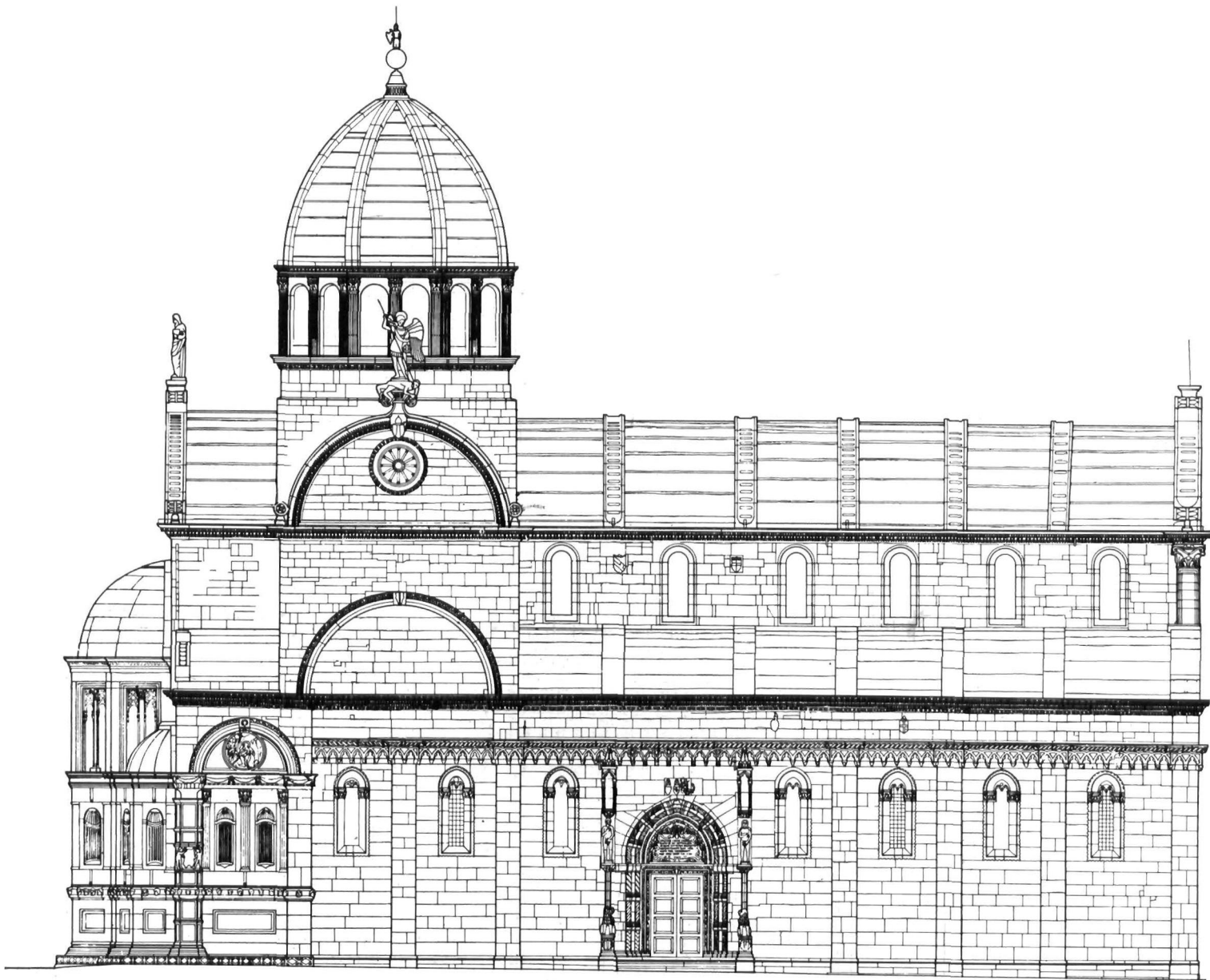


6. Zapadna fasada katedrale, 1:200
(ZFG, 1974)

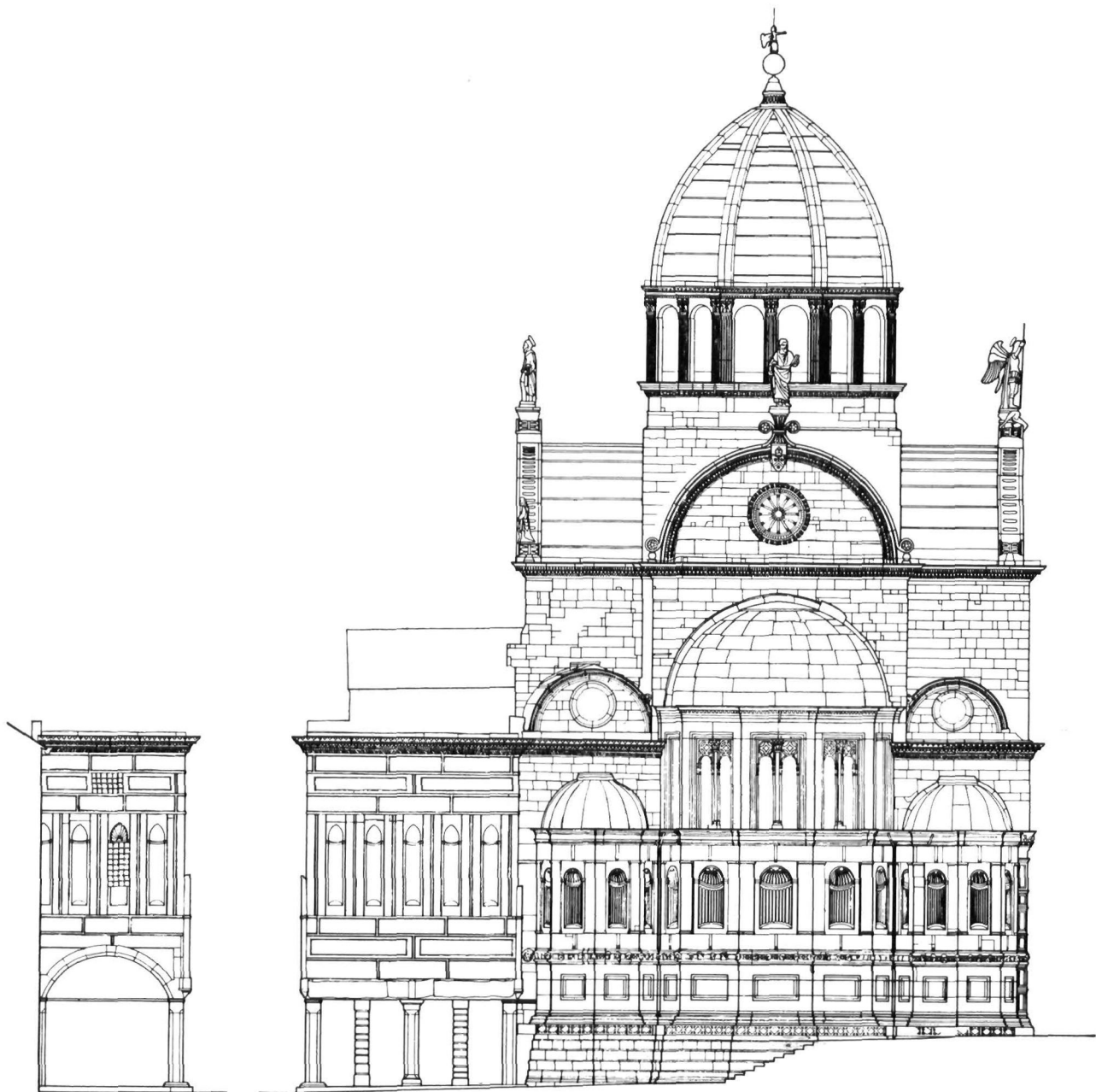
7. Poprečni presjek kroz katedralu (pogled prema zapadu),
1:200
(ZFG, 1974)



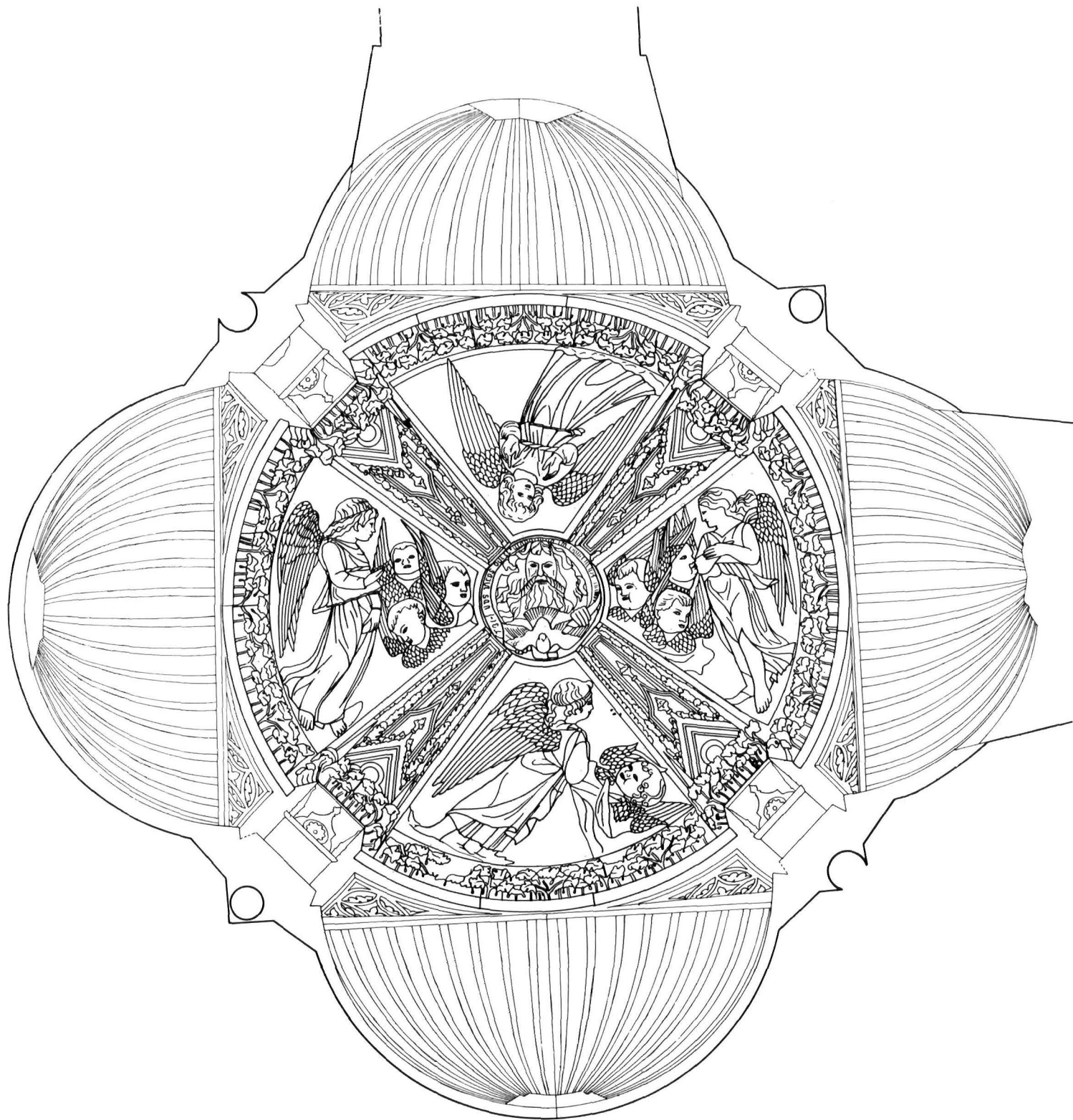
Uzdužni presjek katedrale kroz srednji brod s pogledom
prema sjeveru, 1:200
(ZFG, 1974)



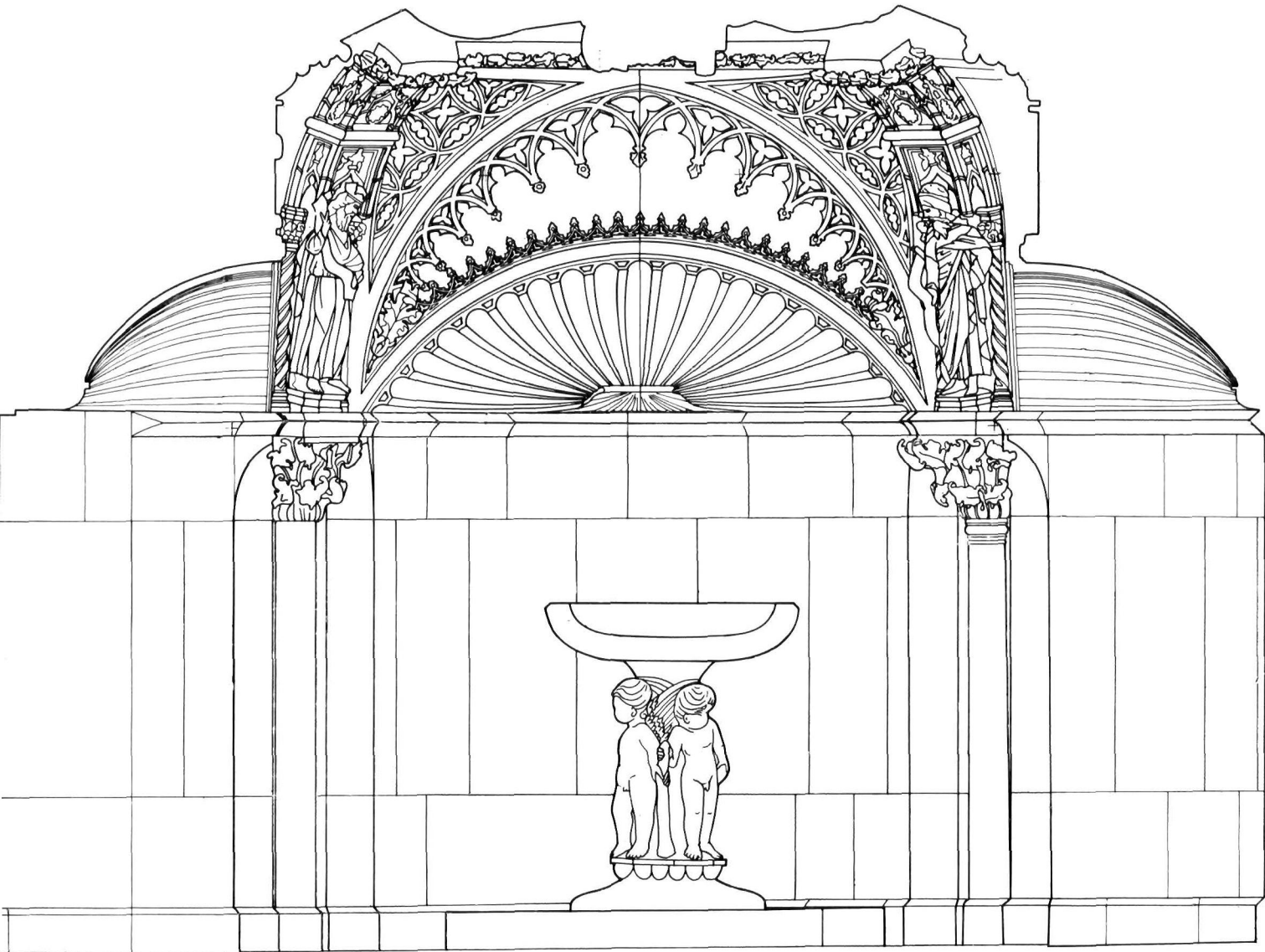
9. Sjeverna fasada katedrale, 1:200
(ZFG, 1974)



10. Istočna fasada katedrale sa sakristijom, 1:200
južna fasada sakristije, 1:200
(ZFG, 1974)

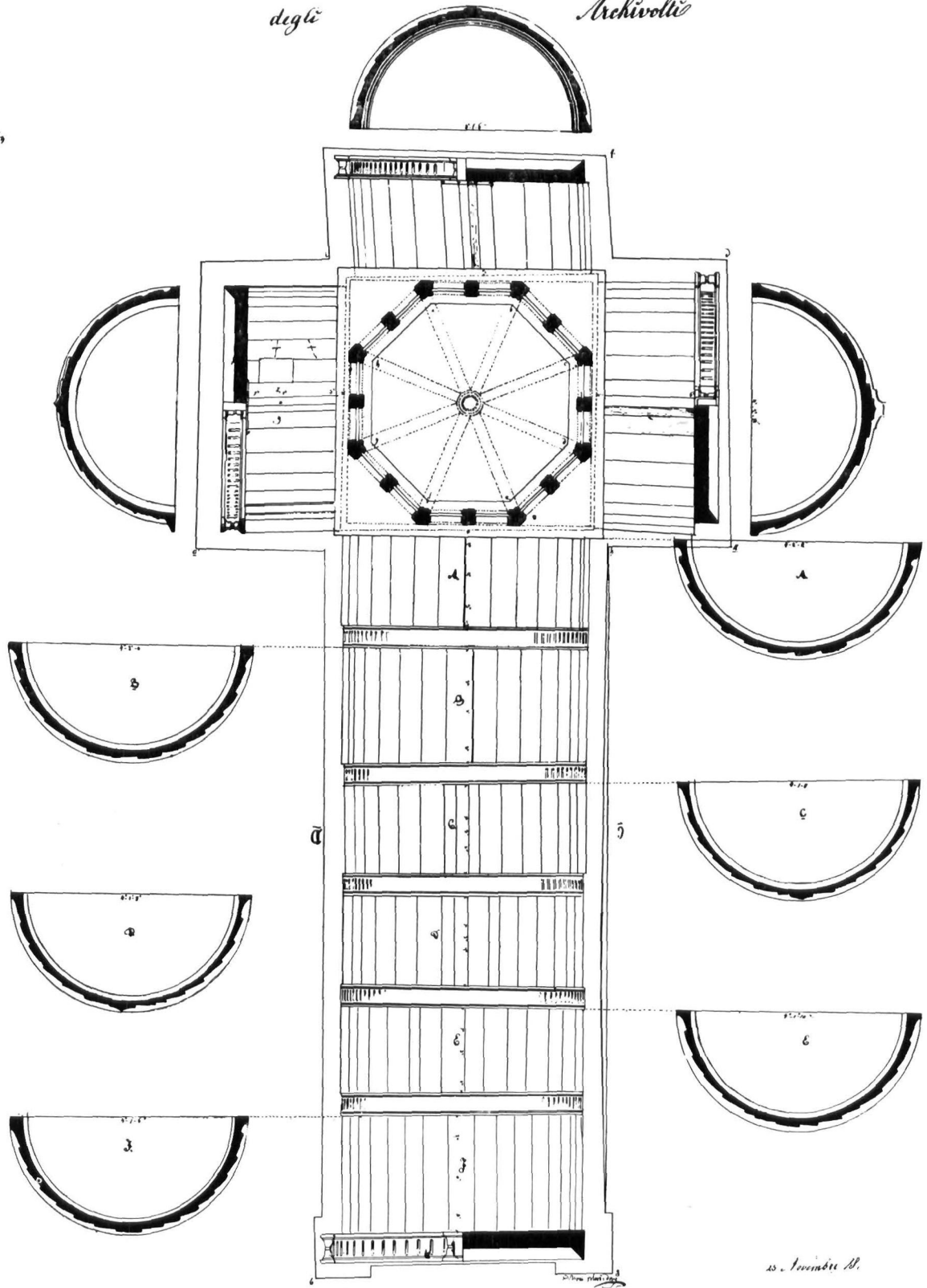


ŠIBENIK — katedrala, krstionica
 — tlocrt s pogledom na svod, 1:50
 — presjek s pogledom na sjever, 1:50
 (ZFG, 1974)

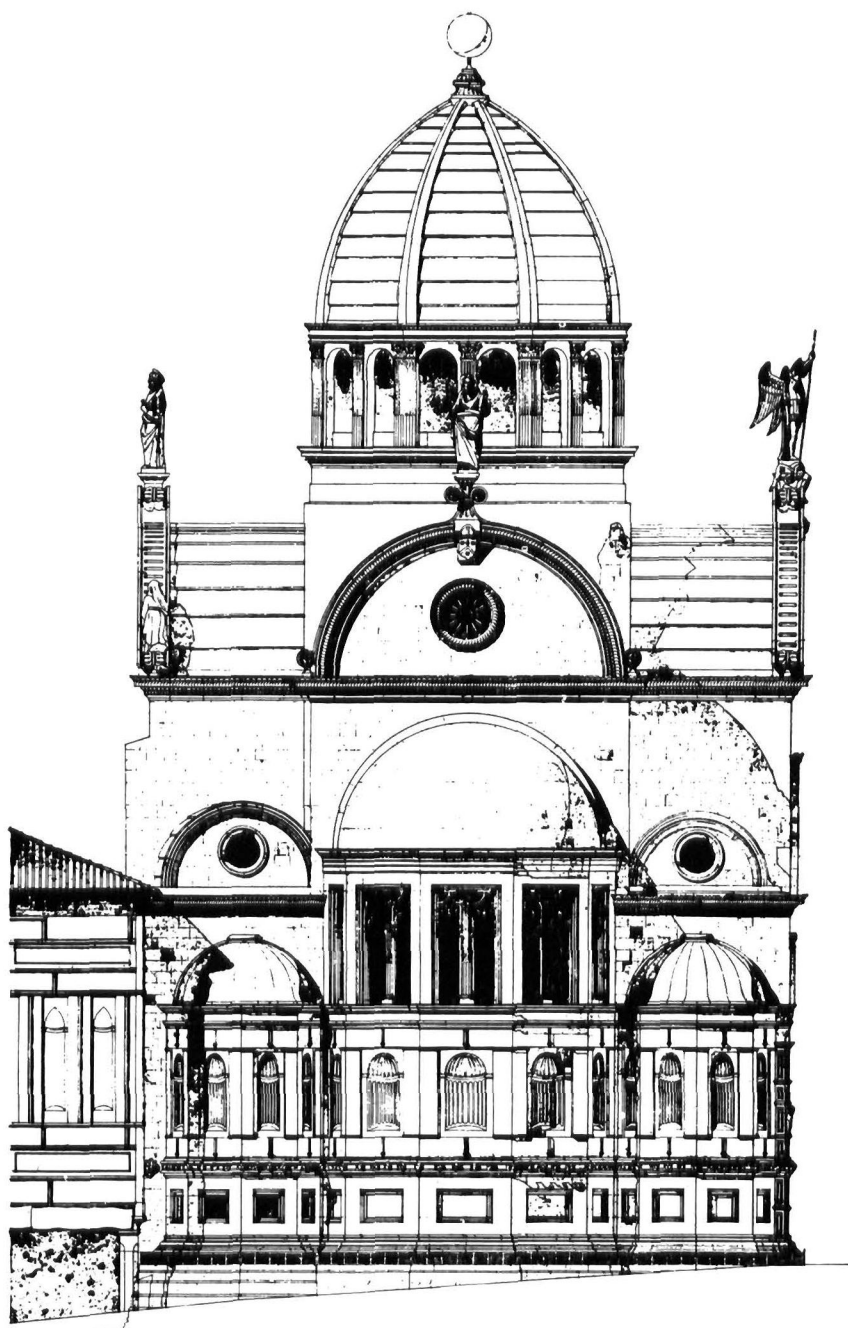


Pianta dei tetti avolti della Croce superiore con la proiezione degli Archivolti

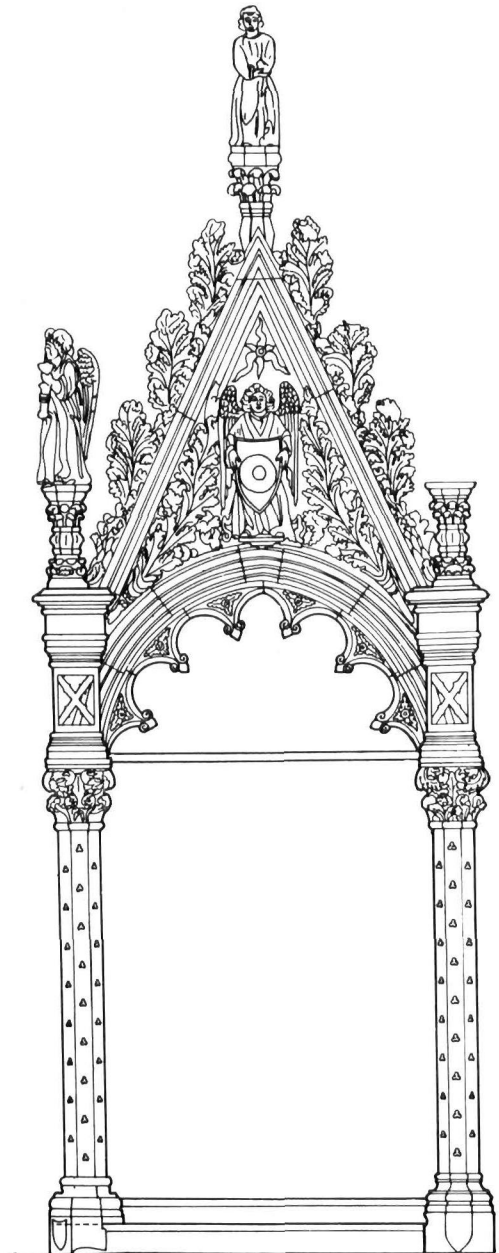
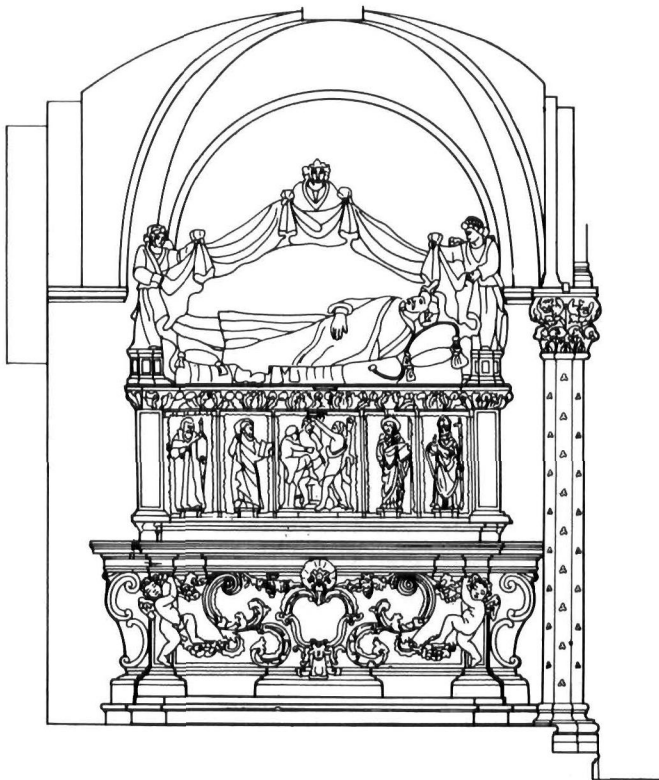
13/40



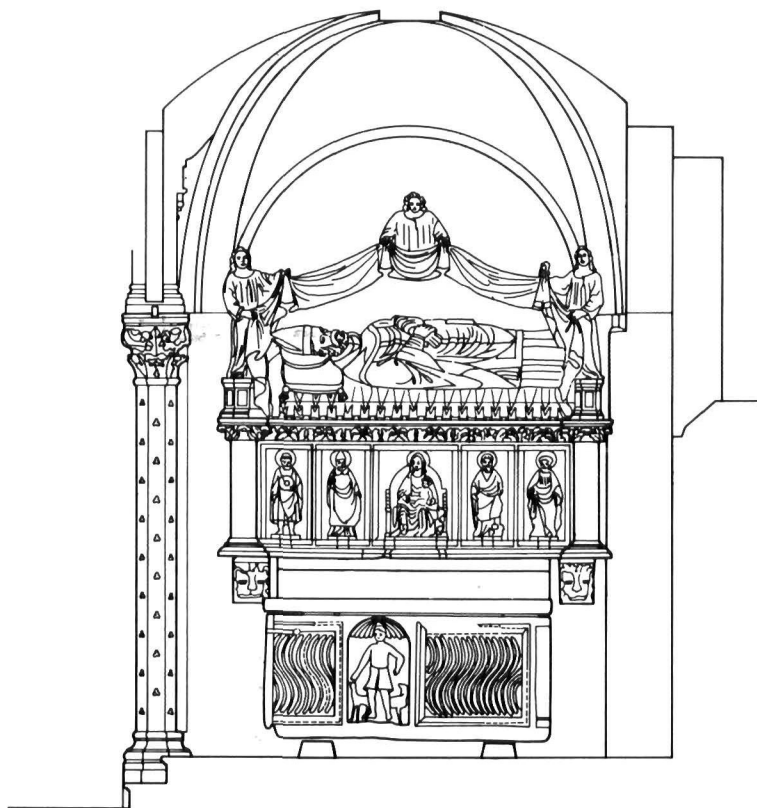
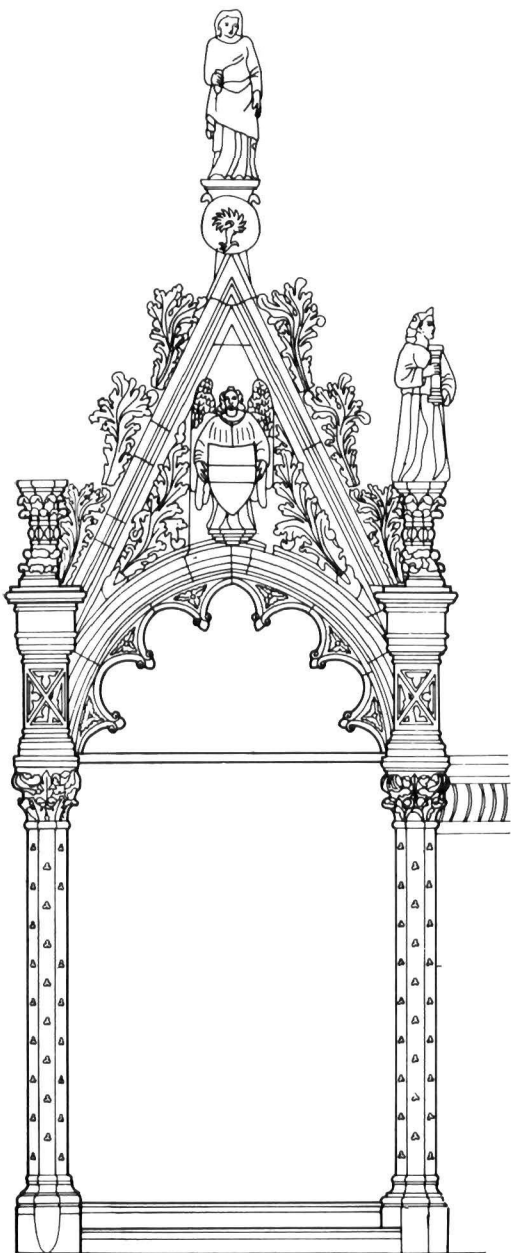
ŠIBENIK — katedrala
nacrt i presjeci krova (P. Bioni, 1853)



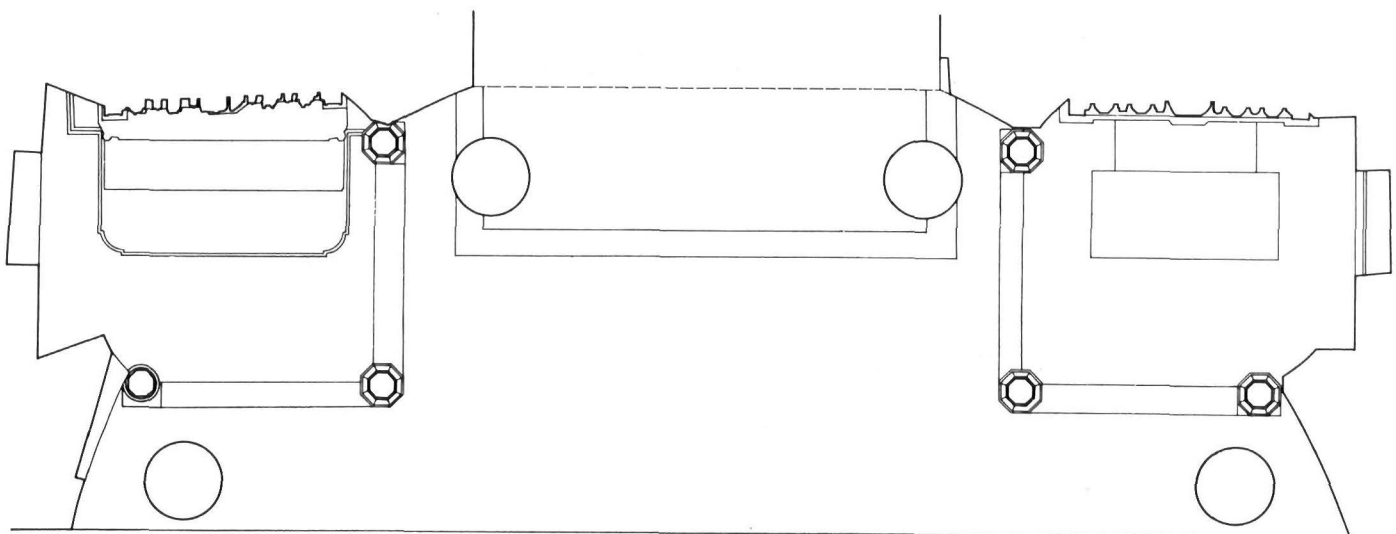
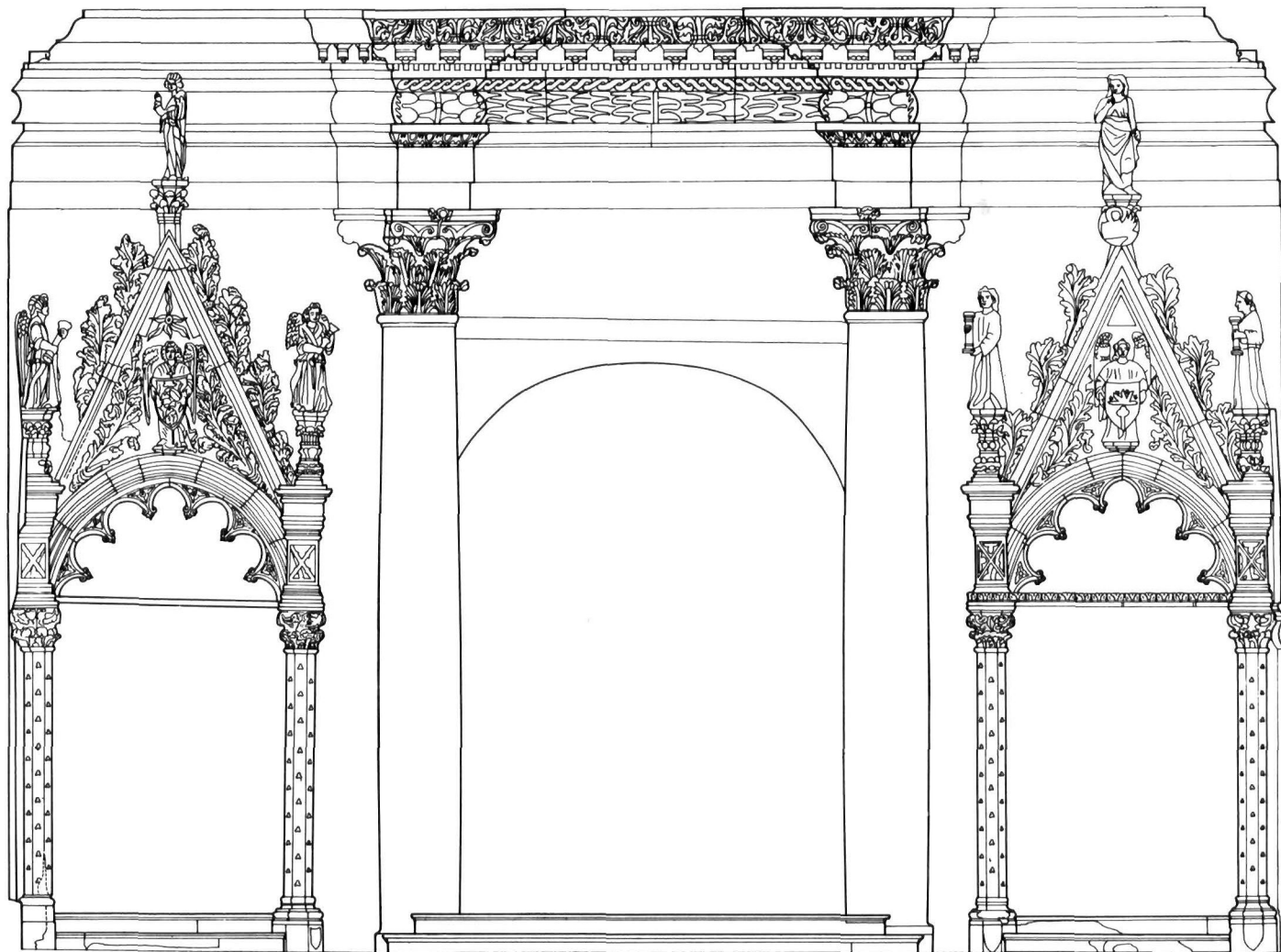
ŠIBENIK — katedrala
istočna fasada (D. Frey, 1913) mjerilo 1:200



SPLIT — katedrala
— oltar sv. Štaša i ciborij, pogled
(ZFG, 1974)

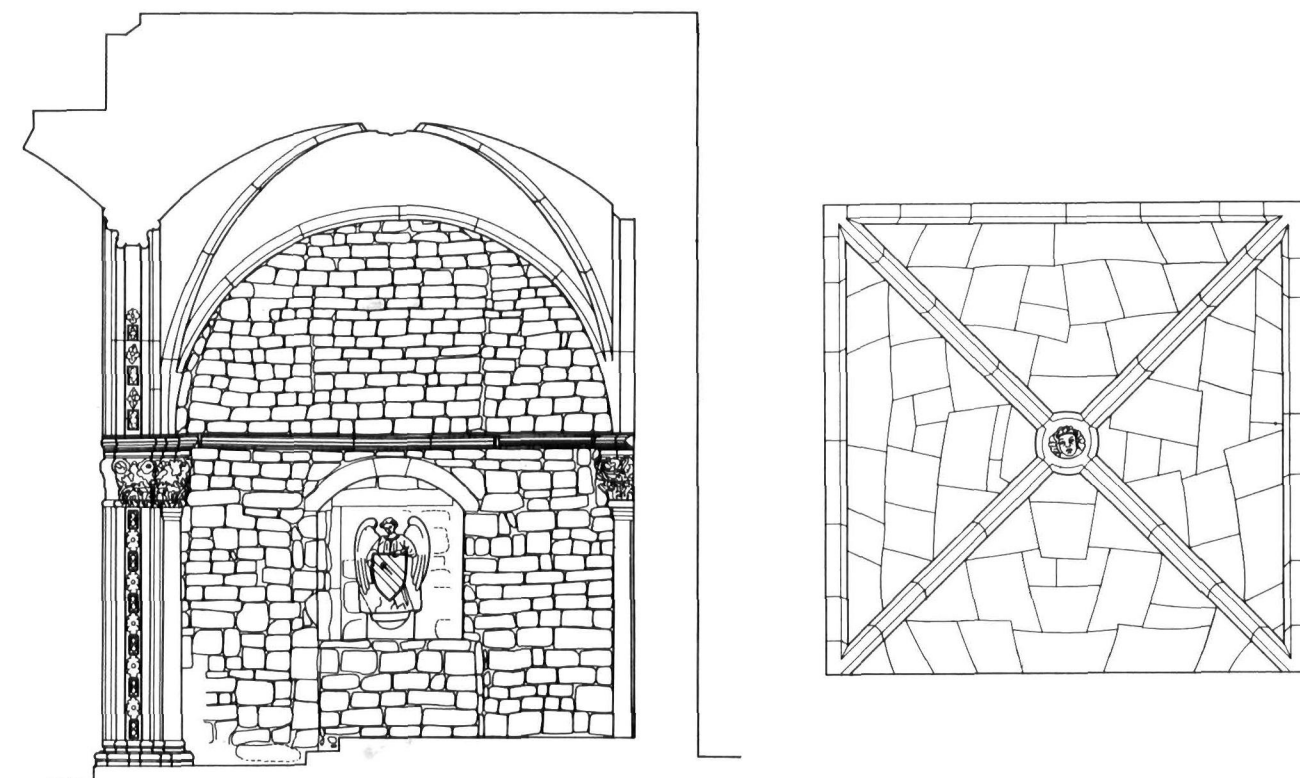
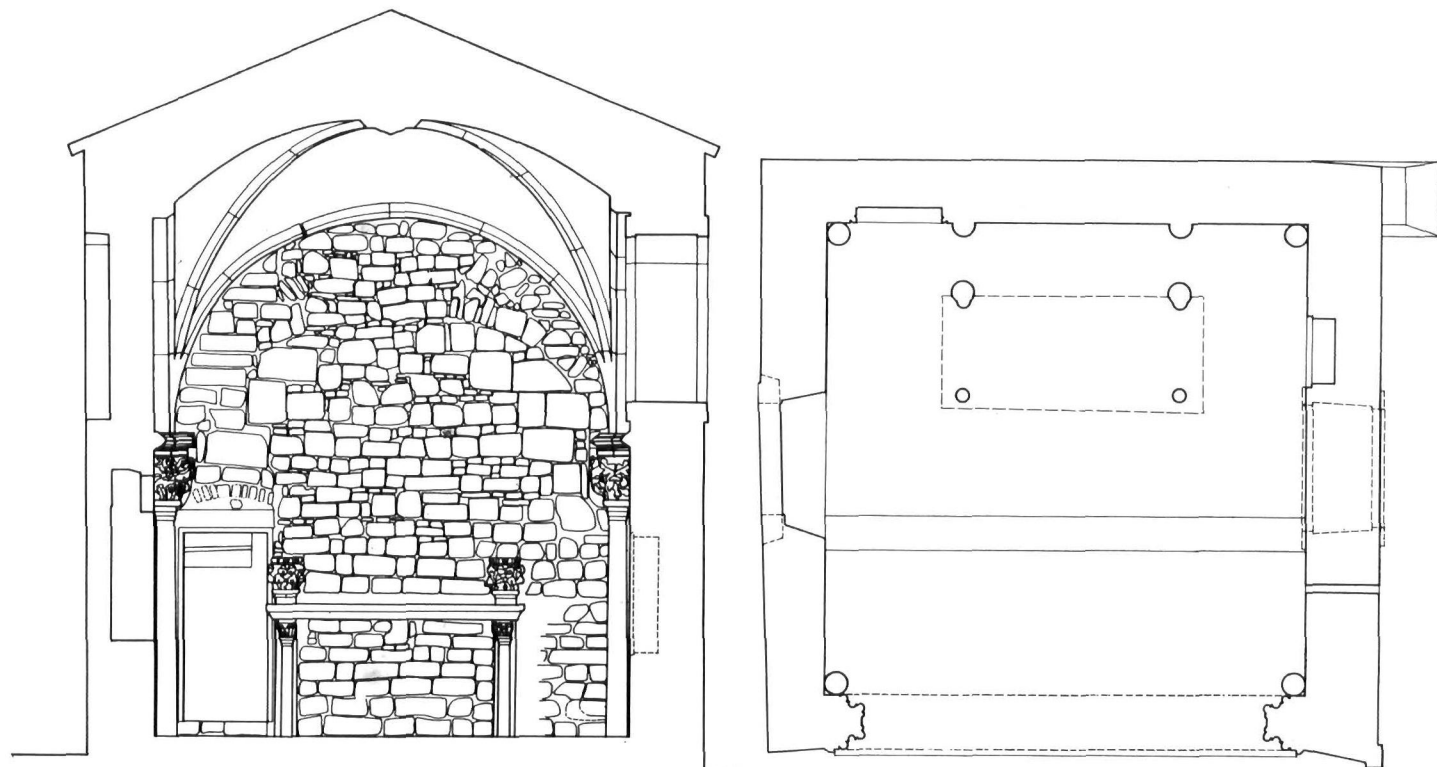


SPLIT — katedrala
 — ciborij i oltar sv. Duje, pogled
 (ZFG, 1974)

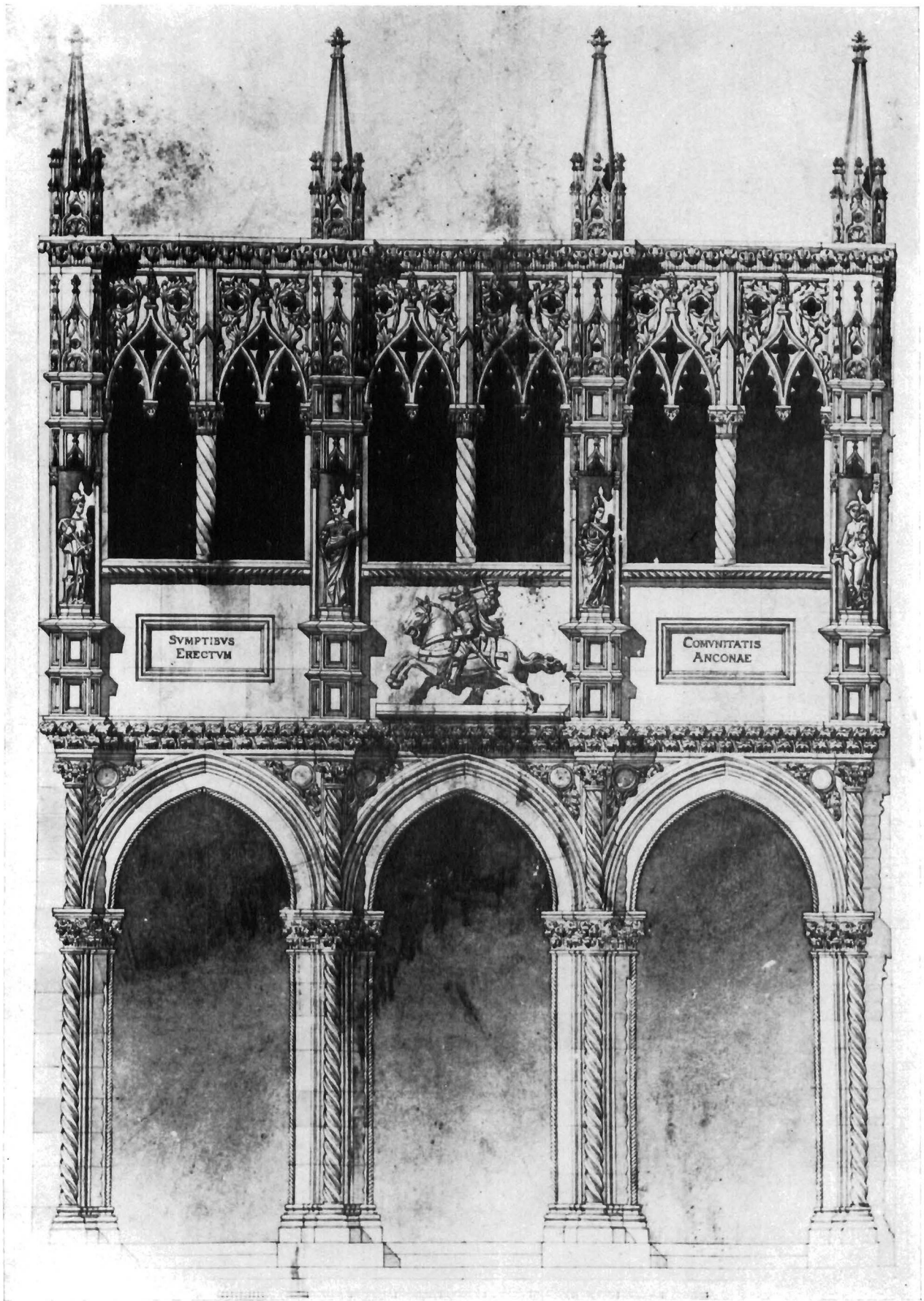


0 3m

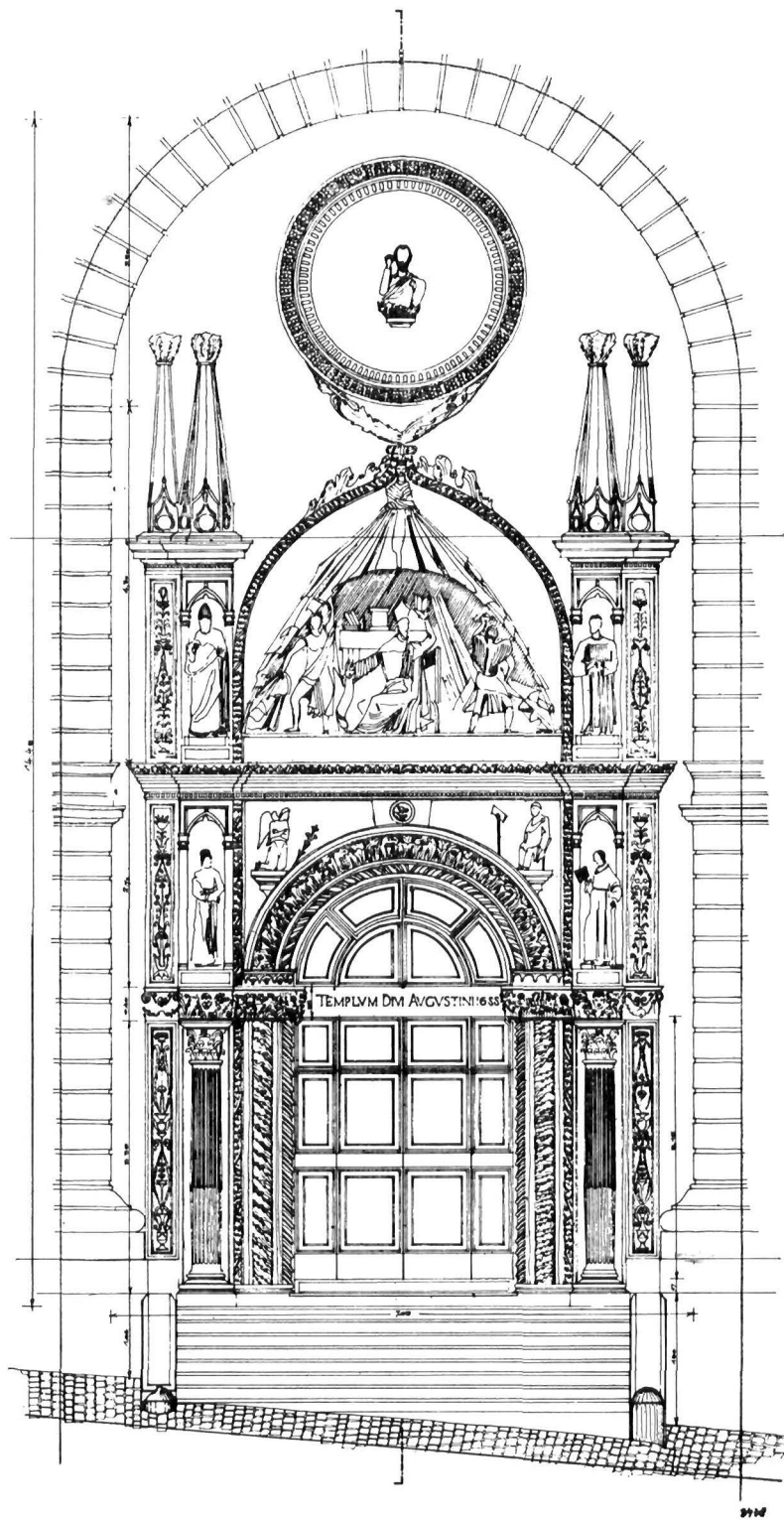
SPLIT — katedrala
 — pogled na istok s ciborijima Sv. Staša i Sv. Duje
 — tlocrta ciborija Sv. Staša i Sv. Duje, 1:50
 (ZFG, 1974)



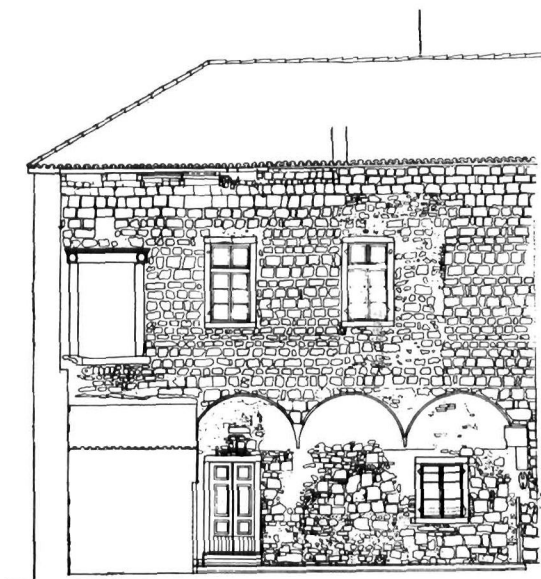
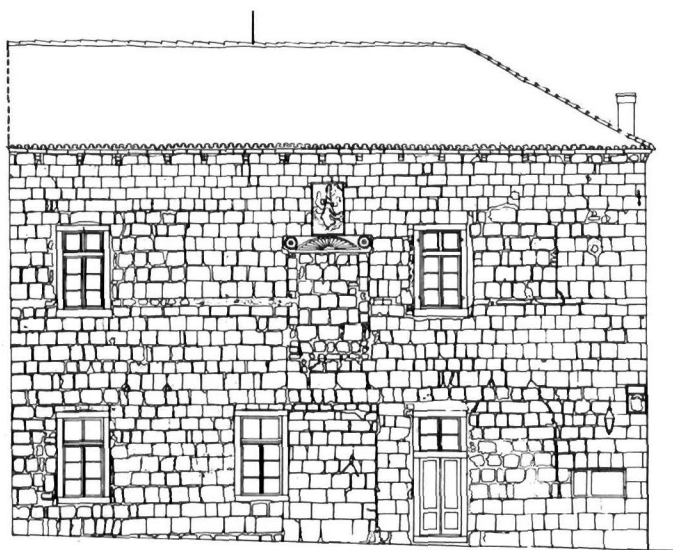
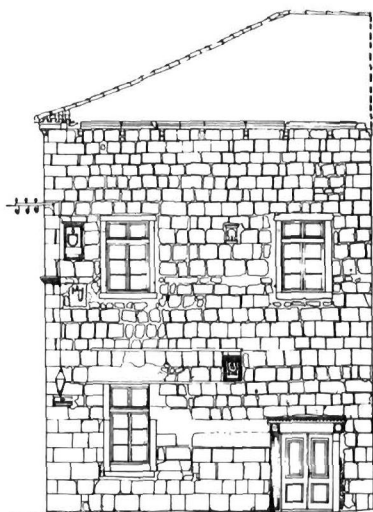
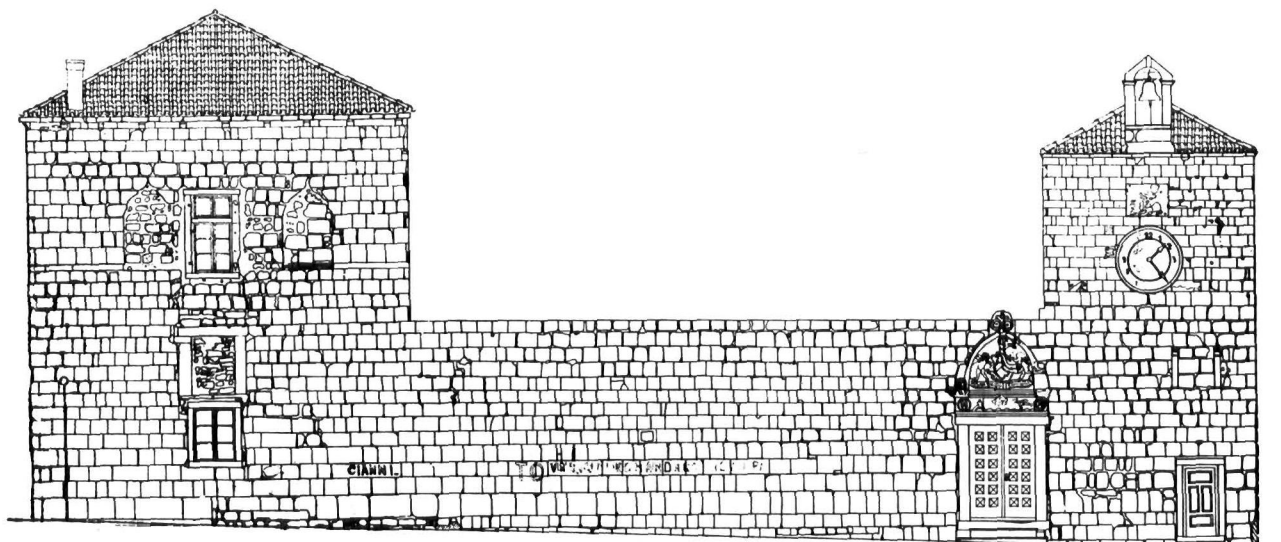
SPLIT, kapela bl. Arnira (u ruševini crkve sv. Eufemije)
 — presjeci s pogledom, tlocrt i pogled na svod, 1:50
 (ZFG, 1974)



ANCONA, Loggia dei Mercanti, nact fasade (D. Frey, 1913)



ANCONA, Sv. Augustin, portal, pogled, 1:100



PAG, Kneževa palača, fasade, 1.200
(sn. V. Donassy, 1967)



ŠIBENIK, Palača Foscolo, fasada, 1:100
(IPU, 1974)